

IMPACT

PROFESSIONAL LEARNING PROGRAM

INSPIRE

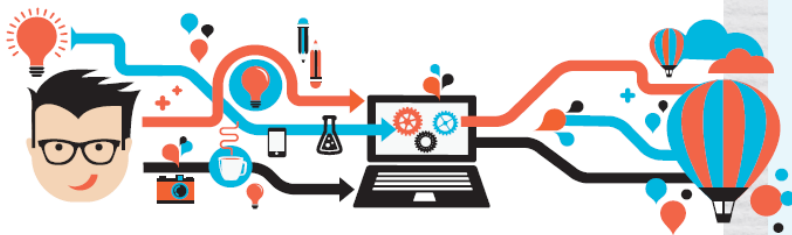
INSPIRE YOUR TEAM TO IMPROVE THEIR PRACTICE USING IMPACT'S NEUROSCIENCE-BASED APPROACH TO TEACHING, LEARNING AND WELLBEING.

- / Find out about the brain's capacity to learn
- / Understand why successful practices work
- / Discover new and inspiring brain-based strategies

TRANSFORM

TRANSFORM YOUR ORGANISATION USING IMPACT'S SIMPLE AND COMPELLING SYSTEM FOR TEACHING, LEARNING AND WELLBEING.

- / Celebrate and continue successful practices
- / Identify and act on areas for improvement
- / Increase your team's ability to innovate
- / Sharpen performance and boost achievement



CONNECT

CONNECT YOUR SCHOOL COMMUNITY USING IMPACT AS A COMMON LANGUAGE FOR TEACHING, LEARNING AND WELLBEING.

- / School leaders and teachers use IMPACT to design, deliver, review and promote programs and practices
- / Students use IMPACT to reflect on their progress, plan for improvement and boost achievement
- / Parents use IMPACT to discuss their child's learning needs and support further learning from home



MAXIMISE R.O.I.

MAXIMISE RETURN ON INVESTMENT (ROI) USING OUR BEFORE, DURING AND AFTER APPROACH.

- / Prepare your strategy and your team
- / Participate in professional learning
- / Increase training transfer by facilitating the application of new knowledge, skills and abilities
- / Identify and measure signs of success
- / Invest in sustained professional learning



BRISBANE SCHOOL OF DISTANCE EDUCATION PROVIDE IMPACT PROFESSIONAL LEARNING PROGRAMS IN CONSULTATION WITH SENTIS TO SCHOOL LEADERS AND TEACHERS

- / Prepare by attending an after-school web conference and viewing digital resources
- / Participate in 3 days of intense professional learning and preparation for implementation, designed and delivered by global experts
- / Access ongoing support and follow-up activities
- / Schools visits can be negotiated

I THOROUGHLY ENJOYED THE NEUROSCIENCE PD. I FOUND MYSELF TOTALLY ENGAGED AND WANTING MORE. BY PUTTING WHAT I HAVE LEARNT INTO PRACTICE THE STUDENTS WILL BE JUST AS ENGAGED AND SUCCESSFUL.

sentis

IMPACT

© Sentis Pty Ltd 2014. This document remains the intellectual property of Sentis Pty Ltd and is protected by copyright and registered trademarks. No material from this document is to be reproduced or used in any format without express written permission. **i1360**

PLEASE CONTACT GLEN WATT, REGIONAL PROJECTS AND TRAINING MANAGER AT BRISBANE SCHOOL OF DISTANCE EDUCATION.

**E: GWATT5@EQ.EDU.AU
M: 0467 789 321**