



✓ Expert guidance

✓ Like-minded members

✓ Differentiated pathway

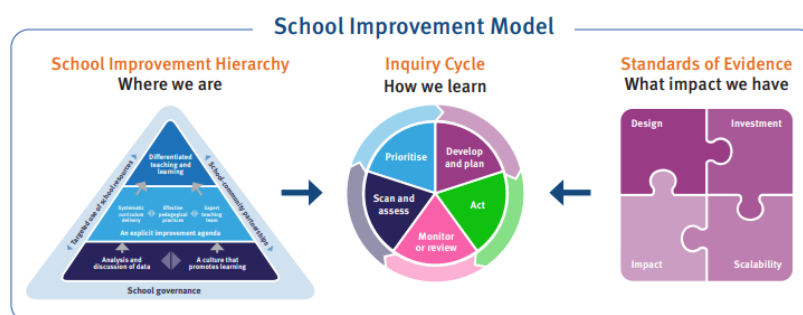
Advance STEM Capability

JOIN HERE!

Join the *STEM IMPACT Network* to advance STEM or STEAM capability at your school.

Access expert guidance, like-minded colleagues and a differentiated professional learning pathway, and focus on one or more of the following school improvement domains:

- ✓ **Systematic curriculum delivery** – align and integrate the STEM or STEAM learning areas and general capabilities to ensure ‘vertical’ and ‘horizontal’ alignment of the Australian Curriculum;
- ✓ **Effective pedagogical practices** – inspire and support teachers to collaboratively design and deliver more effective and engaging STEM or STEAM learning programs;
- ✓ **Expert teaching team** – build capability and expertise by sharing best practice within your school team and collaborating across the *STEM IMPACT Network*.
- ✓ **Differentiated teaching and learning** – use a repertoire of teaching practices that address the diverse learning needs of all students and empower students to take ownership of their learning.



WE SUPPORT YOUR SUCCESS

The *STEM IMPACT Network* is facilitated by the [Department of Education's IMPACT Centre](#) and [Sentis Education](#).

- We guide you through a differentiated professional learning pathway that suits your school or individual context.
- We support you through the Department of Education (DoE) inquiry cycle process.
- We connect you with like-minded members and the relevant Department of Education units who can provide further assistance.

JOIN HERE!


DEVELOP YOURSELF, DEVELOP YOUR TEAM

Principals, leaders and teachers from schools, education centres and alternative education settings are welcome to join the *STEM IMPACT Network*.

- Medium-large schools are advised to involve at least two members initially, with a view to growing membership across your school. We recommend that you develop or enhance a **STEM Leadership Team** involving representatives from senior management, middle management and your teaching staff.
- Small schools often register one staff member.

HOW IT WORKS

1. Login to a 30 minute online induction – approximately one week before the foundational workshop.
2. Attend a two-day foundational workshop.

FOUNDATIONAL TWO-DAY WORKSHOP			
Date	Location	Register	COVID-19 Details
24-25 February 2022 – Thu-Fri Term 1, Week 5 9:00am – 3:30pm	Brisbane IMPACT Centre, Coorparoo – map	Register here by 18 February	 <p>We are proceeding with face-to-face workshops based on the Queensland Government’s COVID-19 roadmap.</p>
14-15 March 2022 – Mon-Tue Term 1, Week 8 Times TBC	Charleville Venue TBC	Register via Roma CLaW	
16-17 March 2022 – Wed-Thu Term 1, Week 8 Times TBC	St George Venue TBC	Register via Roma CLaW	
26-27 May 2022 – Thu-Fri Term 2, Week 6 9:00am – 3:30pm	Brisbane IMPACT Centre, Coorparoo – map	Register here by 20 May	
Regional Qld – contact us to negotiate dates and locations – minimum of 20 paying participants required, coordinate with local school networks, regional office, CLaW etc.			
The workshop program includes: <ul style="list-style-type: none"> • active participation in STEM/STEAM experientials, which serve as exemplar learning experiences; • discovery and analysis of the pedagogy, curriculum and differentiation practices that underpin these learning experiences, and reflection on the strengths and opportunities of your existing practices; • structured collaboration and the opportunity to share experiences and practices with workshop participants; • guidance on how to develop or enhance an expert teaching team; • engagement with DoE school improvement processes, including the <i>Scan and Assess, Prioritise and Develop and Plan</i> phases of the inquiry cycle; • design of your differentiated professional learning pathway. 			

3. Progress your inquiry plan or improvement project as you move to the *Act and Monitor or Review* phases of the inquiry cycle.
4. Engage with the network to:
 - share the plan or project with your *STEM IMPACT Network* leader who can act as a critical friend;
 - participate in differentiated professional learning activities e.g. *STEM IMPACT* workshops, masterclasses and member collaborations that support your improvement focus;
 - intentionally collaborate with like-minded members and relevant Department of Education units.

MEMBERSHIP FEES

- The membership fee is **\$950 per person** – including participation in the foundational workshop and access to all network activities and resources for **12 months**.
- Member subscriptions can be renewed annually at a reduced cost.

Note: The costs above apply to Queensland state government schools. Teacher Relief Scheme (TRS) and travel costs may be necessary to attend in-person workshops.